

TRADE BALANCE OF AGRICULTURAL PRODUCTS BETWEEN GREECE AND FRANCE 2006-2008

The agricultural trade balance between Greece and France was in deficit during the period 2006-2008. In 2007 the agricultural trade balance shrunk by 6.8%. However, it increased by 3.2% in 2008. The changes mentioned above were mainly caused by the corresponding decrease and increase in the trade balance deficit of the meat and meat preparations product category. Indeed, the aforementioned product category accounts, on an average year, for the 60% of the deficit in the total agricultural trade balance between the two countries. More specifically, imports of meat and meat preparations accounted for 56.7% 46.6% and 48.7% of total Greek agricultural imports from France in 2006, 2007 and 2008 respectively.

More precisely, the Greek agricultural **imports** decreased by 4.8% in 2007, but increased by 4.1% in 2008. On the other hand, Greek agricultural **exports** increased by 6.4% in 2007 and 8.7% in 2008.

It should be emphasized that bilateral agricultural products' trade flow between France and Greece constitutes a significant part of the total trade flow between the two countries. In particular, **imports of French agricultural products constitute, on average, 24.3% of Greek total imports from France. Further, 17% of Greek products exported to France, are also agricultural products.**

France is the 3rd major exporter of agricultural products to Greece, with a share of 10% of total agricultural products imported to our country in 2008. **Considering Greek exports of agricultural products, France is ranked 9th in the classification of the international trade partners of Greece in agricultural exports.** In fact, in 2008, France imported 3% of total Greek exported agricultural products.

For the period 2006-2008, we observe slight fluctuations in the value of trade flow between Greece and France. However, these fluctuations are not considered significant in percentage terms. Consequently the trade value for this period remained relatively constant.

The total trade balance between Greece and France is negative for Greece. Data time series show that the severe total trade deficit keeps increasing for Greece. In particular, this deficit increased by 5.6% and 1.2% in 2007 and 2008 respectively.

An explicit description of the French **agricultural products imported by Greece** reveals trade activities in a large number of product categories. Of major importance, on value terms, are the following categories: Meat, Dairy Products, Cereals, Fruits and Vegetables, Food products, Animal Feed and Beverages.

1. The leading category of imported products is that of **Meat and meat preparations**. A 21.7% decrease occurred in the imports of this category in 2007, followed by a 8.8% increase in 2008. Imports in the category concern mostly fresh pork meat and beef.

2. For **Dairy products** fluctuations in imports and exports led to change between deficit and surplus trade balance between the two countries. In 2007 imports increased by 9.6% but in 2008 decreased by 8.6%. Major imported products include: **fresh cheese, cheese byproducts, oils and fats, ice-cream, milk and milk cream (in powder and other forms)**.

3. Regarding **Cereals and cereal products trade**, fluctuations in trade are observed as follows: in 2007/2006 an important increase of 37.7% occurred. Still, in 2008/2007 imports decreased by 13.6%. Major imported products are: **soft wheat, durum wheat, rye (not for sowing), corn hybrids for sowing, various cereal based products, mixtures and dough to be used as inputs for bread, patisserie, and other product making**.

4. For Fruits and Vegetables a marginal increase in imports occurred in 2007, followed by a more dramatic 17.8% decrease in 2008. Imports concern mainly **ready made potatoes, fresh and frozen potatoes including those used for sowing, dried plums, as well as preserved sweets and jams.**

5. Imports of Food products. In 2007 imports increased by 27% and by 43.6 in 2008. Products included in this category concern **various food products not explicitly described** but also **baby food.**

6. As regards **Animal Feed**, imports increased by 28.8% and 7.7% in 2007 and 2008 respectively - mainly **dog and cat food products.**

7. Finally, and with respect to **Drinks** category, there is an increasing trend in imports: 19.6% in 2007 and 8.5% in 2008. Main imported products include: **bubbly wine (Champaign), bottled beer, mineral water and red Bordeaux wine.**

As regards **agricultural products exports** main product categories (with respect to value) are the following: Fish and Fish Preparations, Fruits and Vegetables, Drinks, Tobacco, Oils and Fats as well as Dairy Products.

1. Fish and fish preparations is the leading category of Greek agricultural products exports to France. Exports keep increasing but exports growth rate is decreasing. More specifically, in 2007 exports increased by 5% while in 2008 only by 1.5%. Main exported products are **fresh gilthead seabream and bass**, as well as **mollusk preparations.**

2. Fruits and Vegetables constitute the second larger exports category. Moreover the exports value growth rate is considered significant. Indeed, exports increased by 17% in 2007 and by 25% in 2008. Main exported products in the Fruits and Vegetables category are: **canned peaches and apricots, shelled almonds and various fruits (raw or steamed, or boiled with sweeteners).**

3. Drinks´ exports decreased by 23% in 2007 and remained in the same levels in 2008. Exported products include various wines, e.g.: **Samos wine, Limnos Muscat, and various v.q.p.r.d.**

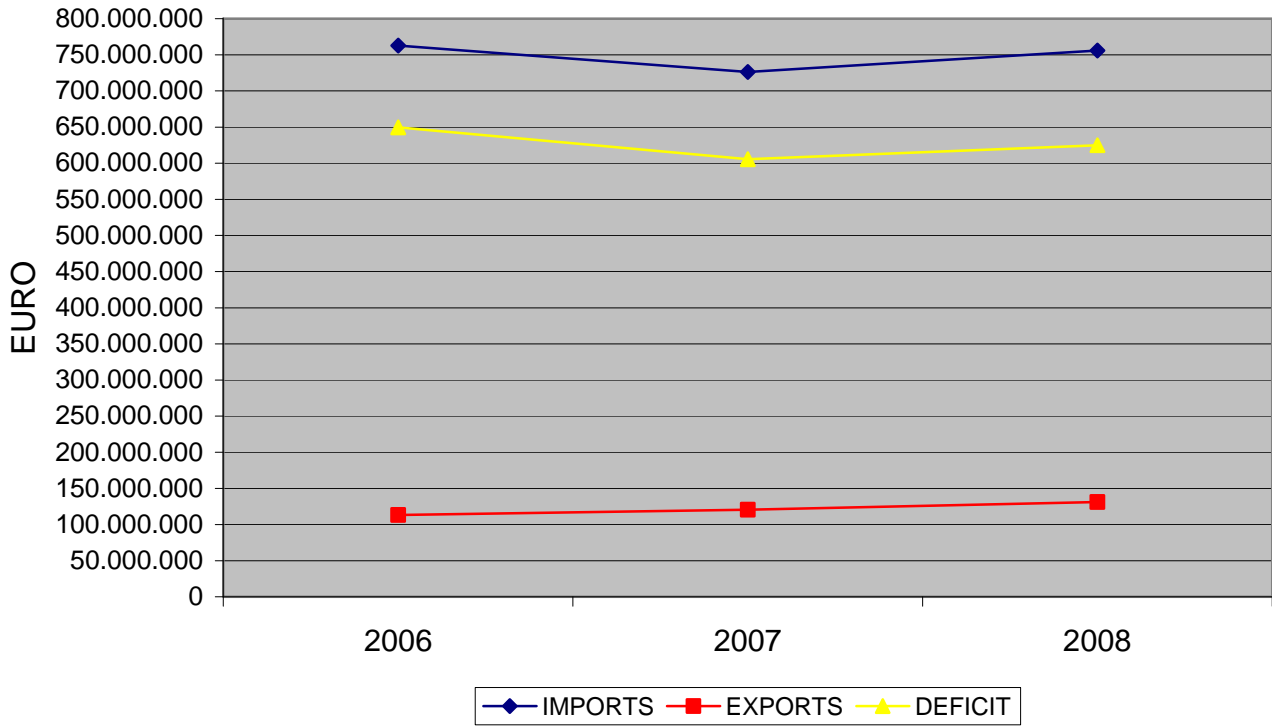
4. Decreasing trends prevail in **Tobacco and Tobacco products** exports, especially due to the drastic decrease in tobacco production in Greece since 2006 and thereafter. Decrease reached 25.7% in 2007 and 25% in 2008. Exported products include mainly **sun cured Eastern type tobacco and tobacco scraps.**

5. Oils and Fats exports decreased in 2007, but in 2008 were restored in the 2006 levels. Main exported products of this category are: **olive oil (virgin or not), and by-products of oils, fats, and wax refinement.**

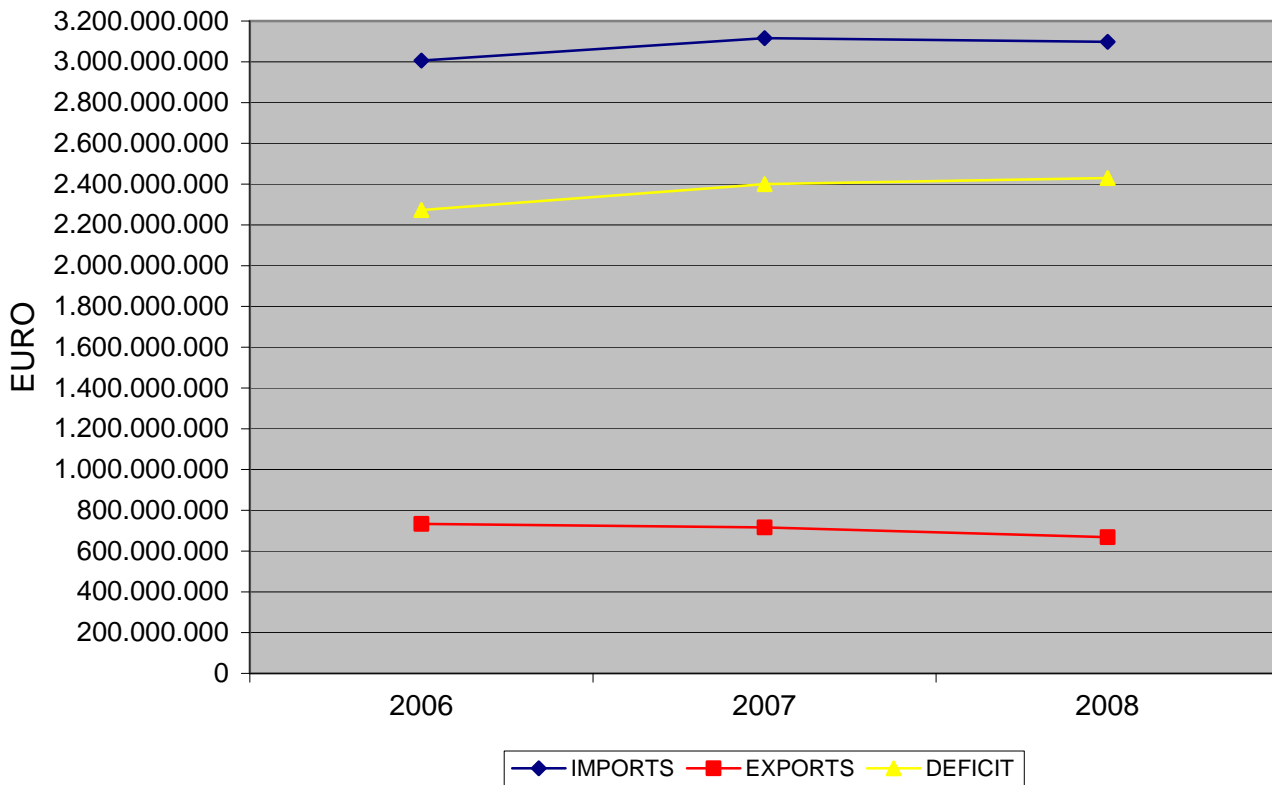
6. Finally, significant fluctuations were observed **in Dairy products** exports in 2007 and 2008: 58% increase and 18,5% decrease respectively. **Feta cheese and yogurt** are the main exported products in this category.

A STATISTICAL DATA AND GRAPHS ANNEX FOLLOWS.

AGRICULTURAL TRADE BALANCE GREECE-FRANCE



TOTAL TRADE BALANCE OF GREECE-FRANCE



2006, PROVISIONAL DATA in Euro
(National Statistical Service of Greece)

SITC codes	PRODUCTS	IMPORTS	% OF TOTAL AGRICULTURAL IMPORTS	EXPORTS	% OF TOTAL AGRICULTURAL EXPORTS	BALANCE
00	Live animals	18.505.163	2,43%	198.726	0,18%	-18.306.437
01	Meat & preparations	432.755.958	56,72%	1.815.474	1,60%	-430.940.484
02	Milk products & eggs	56.741.128	7,44%	3.703.233	3,27%	-53.037.895
03	Fish & preparations	10.470.146	1,37%	51.756.502	45,69%	41.286.356
04	Cereals & preparations	81.491.207	10,68%	1.494.460	1,32%	-79.996.747
05	Fruits & Vegetables	58.269.473	7,64%	27.657.522	24,41%	-30.611.951
06	Sugar, preparation & honey	10.679.579	1,40%	1.892.109	1,67%	-8.787.470
07	Coffee, cocoa, tea, spices	16.626.189	2,18%	391.991	0,35%	-16.234.198
08	Animal feed	18.234.374	2,39%	41.693	0,04%	-18.192.681
09	Food products & preparations	21.518.296	2,82%	2.310.702	2,04%	-19.207.594
11	Beverages	21.786.560	2,86%	7.746.729	6,84%	-14.039.831
12	Tobacco & Tobacco products	6.272.559	0,82%	5.329.674	4,70%	-942.885
21	Hides & skins unprocessed	242.603	0,03%	782.887	0,69%	540.284
22	Oilseeds	364.256	0,05%	410.480	0,36%	46.224
231	Natural rubber	5.872	0,00%	0	0,00%	-5.872
24	Timber & Cork	1.750.422	0,23%	26.882	0,02%	-1.723.540
261-265 & 268	Natural textile fibres	481.292	0,06%	1.793.087	1,58%	1.311.795
29	Agricultural raw material	5.611.522	0,74%	1.580.848	1,40%	-4.030.674
4	Oils & fats	1.109.496	0,15%	4.352.272	3,84%	3.242.776
592 - 11/12	Starches of wheat & corn	42.650	0,01%	0	0,00%	-42.650
	TOTAL AGRICULTURAL PRODUCTS	762.958.745	25,38%	113.285.271	15,45%	-649.673.474
(0-9)	TOTAL TRADE	3.006.457.709	100%	733.289.546	100%	-2.273.168.163

2007, PROVISIONAL DATA in Euro

SITC codes	PRODUCTS	IMPORTS	% OF TOTAL AGRICULTURAL IMPORTS	EXPORTS	% OF TOTAL AGRICULTURAL EXPORTS	BALANCE
00	Live animals	16.520.380	2,28%	950	0,00%	-16.519.430
01	Meat & preparations	338.685.506	46,64%	1.521.431	1,26%	-337.164.075
02	Milk products & eggs	62.195.279	8,57%	5.847.437	4,85%	-56.347.842
03	Fish & preparations	14.327.003	1,97%	54.327.093	45,06%	40.000.090
04	Cereals & preparations	112.182.080	15,45%	3.398.879	2,82%	-108.783.201
05	Fruits & Vegetables	59.277.246	8,16%	32.391.338	26,87%	-26.885.908
06	Sugar, preparation & honey	13.837.507	1,91%	2.657.378	2,20%	-11.180.129
07	Coffee, cocoa, tea, spices	15.488.340	2,13%	605.638	0,50%	-14.882.702
08	Animal feed	23.479.392	3,23%	10.569	0,01%	-23.468.823
09	Food products & preparations	27.795.700	3,83%	2.803.713	2,33%	-24.991.987
11	Beverages	26.053.163	3,59%	5.973.037	4,95%	-20.080.126
12	Tobacco & Tobacco products	6.718.200	0,93%	3.962.573	3,29%	-2.755.627
21	Hides & skins unprocessed	287.645	0,04%	1.171.562	0,97%	883.917
22	Oilseeds	134.108	0,02%	603.590	0,50%	469.482
231	Natural rubber	80.645	0,01%	0	0,00%	-80.645
24	Timber & Cork	576.413	0,08%	0	0,00%	-576.413
261-265 & 268	Natural textile fibres	169.827	0,02%	596.834	0,50%	427.007
29	Agricultural raw material	6.093.392	0,84%	1.440.692	1,20%	-4.652.700
4	Oils & fats	2.166.517	0,30%	3.246.043	2,69%	1.079.526
592 - 11/12	Starches of wheat & corn	52.839	0,01%	0	0,00%	-52.839
	TOTAL AGRICULTURAL PRODUCTS	726.121.182	23,30%	120.558.757	16,84%	-605.562.425
(0-9)	TOTAL TRADE	3.115.873.832	100%	715.838.657	100%	- 2.400.035.175

2008, PROVISIONAL DATA OF N.S.S.G. in Euro

SITC codes	PRODUCTS	IMPORTS	% OF TOTAL AGRICULTURAL IMPORTS	EXPORTS	% OF TOTAL AGRICULTURAL EXPORTS	BALANCE
00	Live animals	21.826.446	2,89%	0	0,00%	-21.826.446
01	Meat & preparations	368.590.382	48,76%	1.300.788	0,99%	-367.289.594
02	Milk products & eggs	56.875.457	7,52%	4.767.177	3,64%	-52.108.280
03	Fish & preparations	14.315.825	1,89%	55.150.343	42,08%	40.834.518
04	Cereals & preparations	96.872.609	12,82%	4.716.199	3,60%	-92.156.410
05	Fruits & Vegetables	48.713.345	6,44%	40.451.963	30,86%	-8.261.382
06	Sugar, preparation & honey	17.928.946	2,37%	3.146.467	2,40%	-14.782.479
07	Coffee, cocoa, tea, spices	19.372.387	2,56%	228.374	0,17%	-19.144.013
08	Animal feed	25.279.798	3,34%	1.116	0,00%	-25.278.682
09	Food products & preparations	39.913.006	5,28%	3.129.947	2,39%	-36.783.059
11	Beverages	28.267.001	3,74%	6.027.068	4,60%	-22.239.933
12	Tobacco & Tobacco products	7.708.794	1,02%	2.966.489	2,26%	-4.742.305
21	Hides & skins unprocessed	391.921	0,05%	1.070.119	0,82%	678.198
22	Oilseeds	607.494	0,08%	1.208.102	0,92%	600.608
231	Natural rubber	114.099	0,02%	0	0,00%	-114.099
24	Timber & Cork	561.688	0,07%	41.840	0,03%	-519.848
261-265 & 268	Natural textile fibres	358.288	0,05%	1.043.436	0,80%	685.148
29	Agricultural raw material	6.593.826	0,87%	1.570.039	1,20%	-5.023.787
4	Oils & fats	1.595.847	0,21%	4.250.146	3,24%	2.654.299
592 - 11/12	Starches of wheat & corn	16.241	0,00%	0	0,00%	-16.241
	TOTAL AGRICULTURAL PRODUCTS	755.903.400	24,40%	131.069.613	19,61%	-624.833.787
(0-9)	TOTAL TRADE	3.098.017.174	100%	668.378.714	100%	-2.429.638.460